



ITAP-FIT[®] FITTINGS

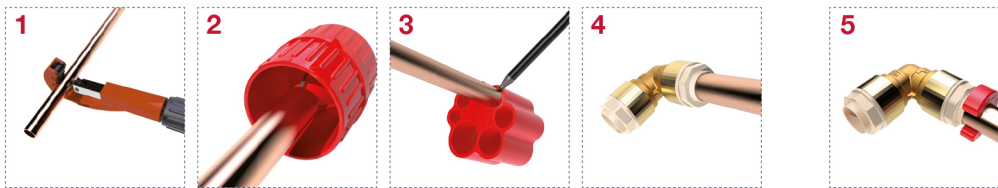
640 Male elbow

INSTRUCTIONS



FOUR SIMPLE STEPS FOR A SAFE INSTALLATION

1. Cut the pipe by a rotary pipe cutter.
 2. Deburr the external surface of the pipe.
 3. Insert the pipe in the depth gauge and mark the pipe.
 4. Insert the pipe by pushing it as far as it reaches the blocking point, that should correspond to the mark made before.
- If you are using cross-linked polyethylene pipes (PEX) or polybutylene pipes you have to insert the liner before the connection.



5. To disconnect the fitting you just need to push the release liner by the clip and at the same time pull the pipe.

ADVANTAGES:

- SAVING OF TIME DURING THE INSTALLATION AS FAR AS 90%
- SUITABLE FOR SANITARY AND HEATING PLANTS
- NO NEED OF SPECIAL OR EXPENSIVE TOOLS FOR THE INSTALLATION
- THE CONNECTION IS REVERSIBLE

USE OF THE FITTINGS WITH COPPER, PEX AND POLYBUTYLENE PIPE

