



TECHNICAL CATALOGUE

# DISTRIBUTION UNITS AND MANIFOLDS FOR CENTRAL HEATING PLANT



## > THE COMPANY

ITAP SpA, founded in Lumezzane (Brescia) in 1972, is currently one of the leading production companies in Italy of **valves, fittings and distribution manifolds** for plumbing and heating systems.

Thanks to fully automated production processes, with 85 transfer machines and 55 assembly lines, we are able to produce 400,000 pieces per day.

Our innate pursuit for innovation and observance of technical regulations is supported by the company certification ISO 9001. The company has always considered its focus on quality as the main tool to obtain significant business results: today ITAP SpA is proud to offer products bearing the approval of numerous international certifying bodies.



> ITAP products have obtained approvals by more than 30 certification bodies from all over the world.





# DISTRIBUTION UNITS AND MANIFOLDS FOR CENTRAL HEATING PLANT

## 951 Direct distribution unit DN20



SIZE	PRESSURE	CODE	PACKING
1"	10bar/145psi	9510100090CP	1/1
1"	10bar/145psi	9510100090CPG	1/1

### TECHNICAL SPECIFICATIONS

Supplied with insulation.

Kv = 23 m<sup>3</sup>/h.

Maximum operating pressure: 6 bar.

Maximum working temperature: 100°C.

System-side connection: 1".

Boiler-side connection: 1".

Centres distance: 90 mm.

Threads: ISO 228 (equivalent to DIN EN ISO 228 and BS EN ISO 228).

Check valve on return circuit.

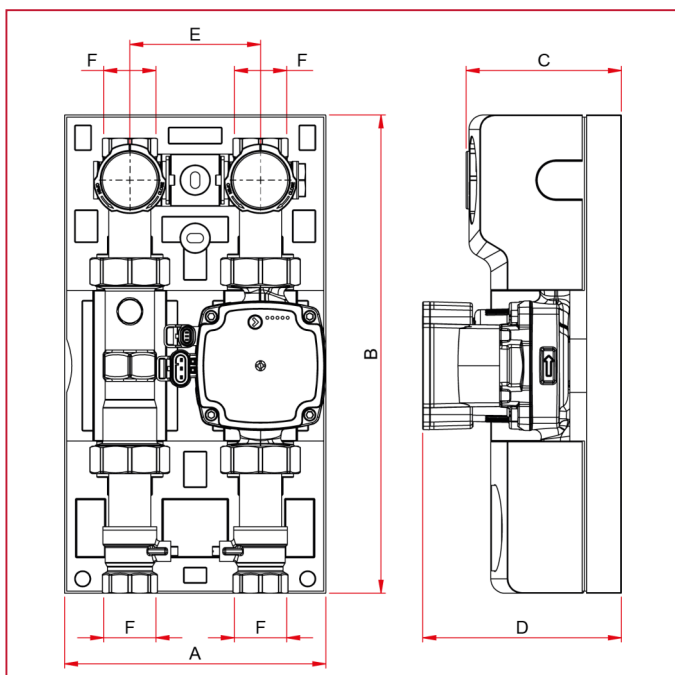
Reversible right - left.

Flow coefficient Kv referring to the ball valve only.

Art. 9510100090CP with Wita pump.

Art. 9510100090CPG with Grundfos pump.

### OVERALL DIMENSIONS





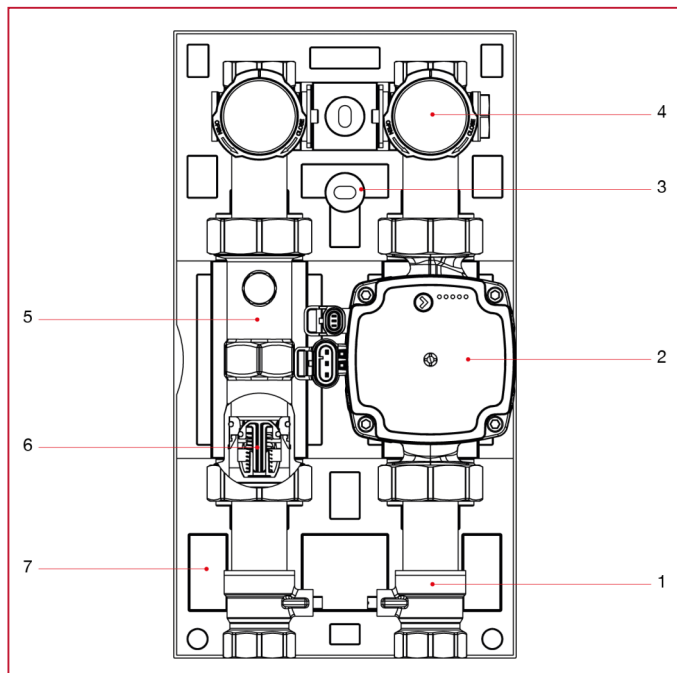
## DISTRIBUTION UNITS AND MANIFOLDS FOR CENTRAL HEATING PLANT

	1"	1"
A	180	108
B	330	330
C	107	107
D	137	137
E	90	90
F	1" F ISO228	1" F ISO228



# DISTRIBUTION UNITS AND MANIFOLDS FOR CENTRAL HEATING PLANT

## MATERIALS



POS.	DESCRIPTION	N.	MATERIAL
1	Ball valve	4	-
1a	Body	-	Brass CW617N-DW
1b	Stem	-	Brass CW617N-DW
1c	Ball	-	Brass CW617N-DW
1d	Pocket	-	Brass CW617N-DW
1e	Sealings	-	EPDM
1f	Ball sealings	-	PTFE
1g	Handle	-	PA6 30% FV
2	High efficiency circulator	1	-
2a	Body	-	Cast iron
3	Wall mounting bracket	1	-
3a	Body	-	Zinc-plated steel
3b	Screws	-	Zinc-plated steel
4	Termometer	2	-
4a	Body	-	ABS
4b	Transparent	-	Atluglas
4c	Clock face	-	Aluminium
4d	Indicator	-	PA6
5	Connecting pipe	1	-
6	Check Valve	1	-
6a	Body	-	POM
6b	Sealings	-	EPDM
6c	Spring	-	AISI 302
7	Insulation shell	1	EPP 38 kg/m3



## DISTRIBUTION UNITS AND MANIFOLDS FOR CENTRAL HEATING PLANT

### 952 Fixed point distribution and regulation unit DN20



SIZE	PRESSURE	CODE	PACKING
1"	10bar/145psi	9520100090CP	1/1
1"	10bar/145psi	9520100090CPG	1/1

#### TECHNICAL SPECIFICATIONS

Supplied with insulation.

Kv = 7,5 m<sup>3</sup>/h.

Maximum operating pressure: 6 bar.

Maximum working temperature: 100°C.

System-side connection: 1".

Boiler-side connection: 1".

Centres distance: 90 mm.

Regulation of the flow temperature: 20°C – 70°C.

Threads: ISO 228 (equivalent to DIN EN ISO 228 and BS EN ISO 228).

Check valve on return circuit.

Reversible right - left.

Flow coefficient Kv referring to the mixing valve only.

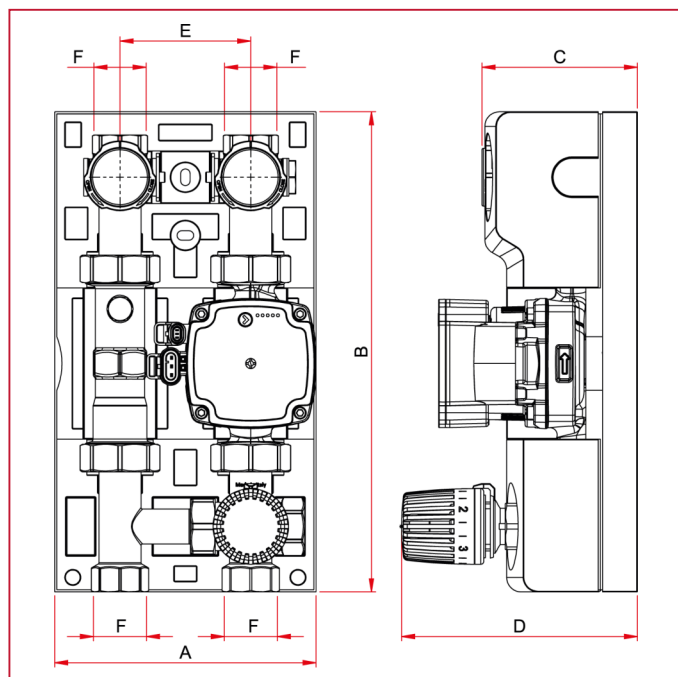
Art. 9520100090CP with Wita pump.

Art. 9520100090CPG with Grundfos pump.



# DISTRIBUTION UNITS AND MANIFOLDS FOR CENTRAL HEATING PLANT

## OVERALL DIMENSIONS

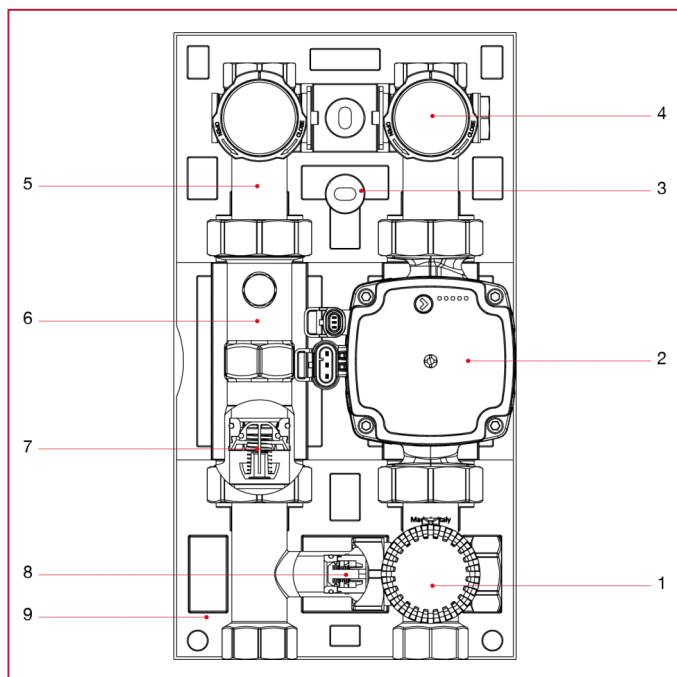


	1"	1"
A	180	180
B	330	330
C	107	107
D	170	170
E	90	90
F	1" F ISO228	1" F ISO228



# DISTRIBUTION UNITS AND MANIFOLDS FOR CENTRAL HEATING PLANT

## MATERIALS







## DISTRIBUTION UNITS AND MANIFOLDS FOR CENTRAL HEATING PLANT

POS.	DESCRIPTION	N.	MATERIAL
1	Mixing valve	1	-
1a	Body	-	Brass CW617N-DW
1b	Stem	-	Brass CW617N-DW
1c	Sealings	-	EPDM
1d	Spring	-	AISI 302
1e	Thermostatic control	1	-
2	High efficiency circulator	1	-
2a	Body	-	Cast iron
3	Wall mounting bracket	1	-
3a	Body	-	Zinc-plated steel
3b	Screws	-	Zinc-plated steel
4	Termometer	2	-
4a	Body	-	ABS
4b	Transparent	-	Atluglas
4c	Clock face	-	Aluminium
4d	Indicator	-	PA6
5	Ball valve	2	-
5a	Body	-	Brass CW617N-DW
5b	Stem	-	Brass CW617N-DW
5c	Ball	-	Brass CW617N-DW
5d	Pocket	-	Brass CW617N-DW
5e	Sealings	-	EPDM
5f	Ball sealings	-	PTFE
5g	Handle	-	PA6 30% FV
6	Connecting Pipe	1	-
7/8	Check Valve	2	-
7/8a	Body	-	POM
7/8b	Sealings	-	EPDM
7/8c	Spring	-	AISI 302
9	Insulation shell	1	EPP 38 kg/m3



## DISTRIBUTION UNITS AND MANIFOLDS FOR CENTRAL HEATING PLANT

### 953 Motorised distribution and regulation unit DN20



SIZE	PRESSURE	CODE	PACKING
1"	10bar/145psi	9530100090230C P	1/1
1"	10bar/145psi	9530100090230C PG	1/1
1"	10bar/145psi	9530100090024C P	1/1
1"	10bar/145psi	9530100090024C PG	1/1

#### TECHNICAL SPECIFICATIONS

Supplied with insulation.

Kv = 7,5 m<sup>3</sup>/h.

Maximum operating pressure: 6 bar.

Maximum working temperature: 100°C.

System-side connection: 1".

Boiler-side connection: 1".

Centres distance: 90 mm.

Threads: ISO 228 (equivalent to DIN EN ISO 228 and BS EN ISO 228).

Check valve on return circuit.

Reversible right - left.

Flow coefficient Kv referring to the mixing valve only.

Art. 9530100090230CP Model with 230V 3-point motor with Wita pump.

Art. 9530100090230CPG Model with 230V 3-point motor with Grundfos pump.

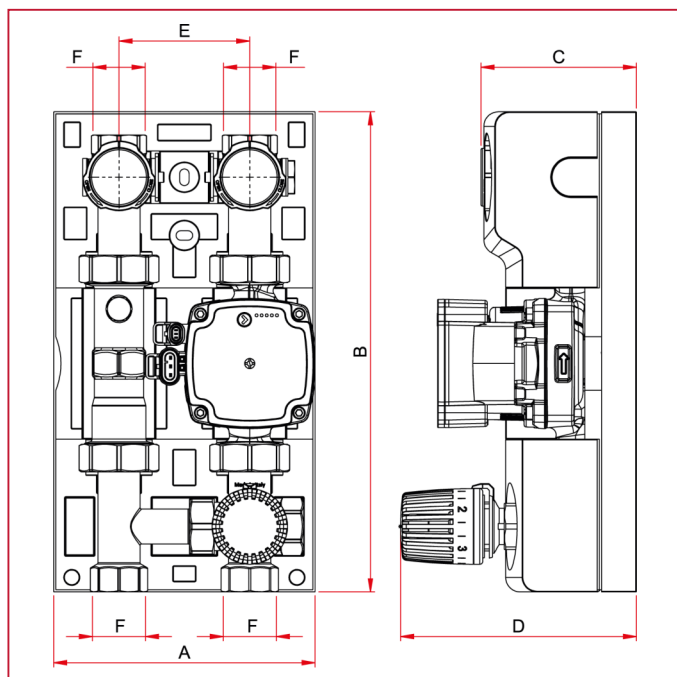
Art. 9530100090024CP Model with 24V motor (0-10V) with Wita pump.

Art. 9530100090024CPG Model with 24V motor (0-10V) with Grundfos pump.



# DISTRIBUTION UNITS AND MANIFOLDS FOR CENTRAL HEATING PLANT

## OVERALL DIMENSIONS

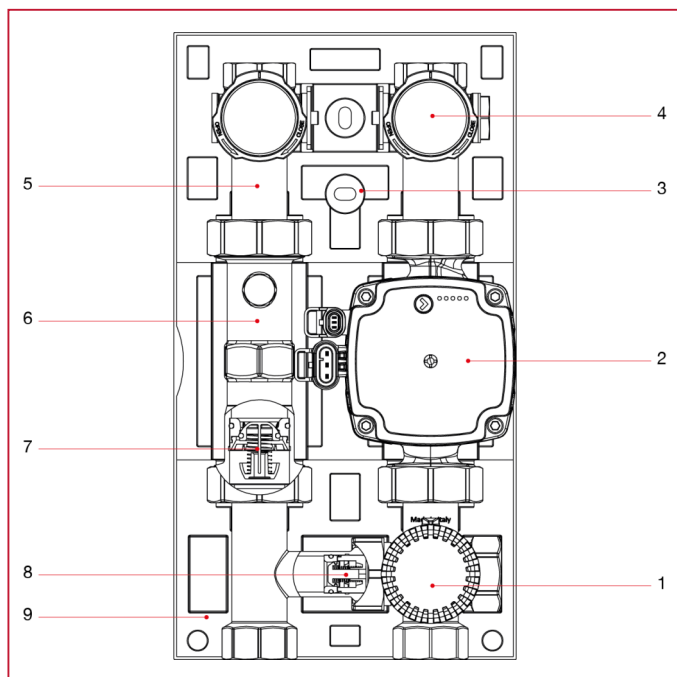


	1"	1"	1"	1"
A	180	180	180	180
B	330	330	330	330
C	107	107	107	107
D	170	170	170	170
E	90	90	90	90
F	1" F ISO228	1" F ISO228	1" F ISO228	1" F ISO228



# DISTRIBUTION UNITS AND MANIFOLDS FOR CENTRAL HEATING PLANT

## MATERIALS





## DISTRIBUTION UNITS AND MANIFOLDS FOR CENTRAL HEATING PLANT

POS.	DESCRIPTION	N.	MATERIAL
1	Mixing valve	1	-
1a	Body	-	Brass CW617N-DW
1b	Stem	-	Brass CW617N-DW
1c	Sealings	-	EPDM
1d	Spring	-	AISI 302
1e	Actuator	1	-
2	High efficiency circulator	1	-
2a	Body	-	Cast iron
3	Wall mounting bracket	1	-
3a	Body	-	Zinc-plated steel
3b	Screws	-	Zinc-plated steel
4	Termometer	2	-
4a	Body	-	ABS
4b	Transparent	-	Atluglas
4c	Clock face	-	Aluminium
4d	Indicator	-	PA6
5	Ball valve	2	-
5a	Body	-	Brass CW617N-DW
5b	Stem	-	Brass CW617N-DW
5c	Ball	-	Brass CW617N-DW
5d	Pocket	-	Brass CW617N-DW
5e	Sealings	-	EPDM
5f	Ball sealings	-	PTFE
5g	Handle	-	PA6 30% FV
6	Connecting Pipe	1	-
7/8	Check Valve	2	-
7/8a	Body	-	POM
7/8b	Sealings	-	EPDM
7/8c	Spring	-	AISI 302
9	Insulation shell	1	EPP 38 kg/m3



# DISTRIBUTION UNITS AND MANIFOLDS FOR CENTRAL HEATING PLANT

## 959 Distribution manifold with integrated hydraulic separator and adjustable by-pass



SIZE	PRESSURE	CODE	PACKING
1"	10bar/145psi	959010001	1/3
1"	10bar/145psi	959010002	1/2
1"	10bar/145psi	959010003	1/1

### TECHNICAL SPECIFICATIONS

Supplied with insulation and wall mounting brackets.

Distribution manifold in stainless steel AISI 304.

Maximum operating pressure: 6 bar.

Maximum working temperature: 100°C.

Suitable for flow rates up to 2 m<sup>3</sup>/h ( for single zone).

Main connections: 1".

Outlet connections: 1".

Outlets centres distances: 90 mm.

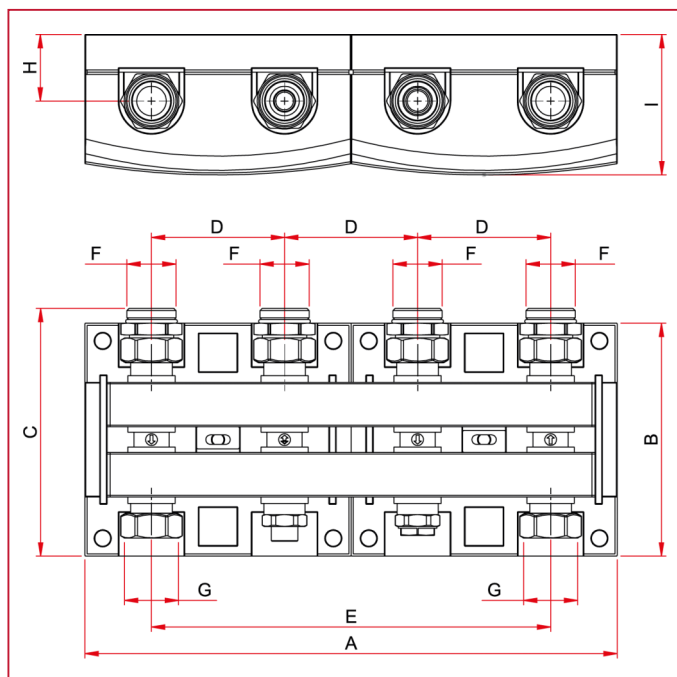
Threads: ISO 228 (equivalent to DIN EN ISO 228 and BS EN ISO 228).

Art. 959010001 Distribution manifold for single zone.

Art. 959010002 Distribution manifold for two zones.

Art. 959010003 Distribution manifold for three zones.

### OVERALL DIMENSIONS

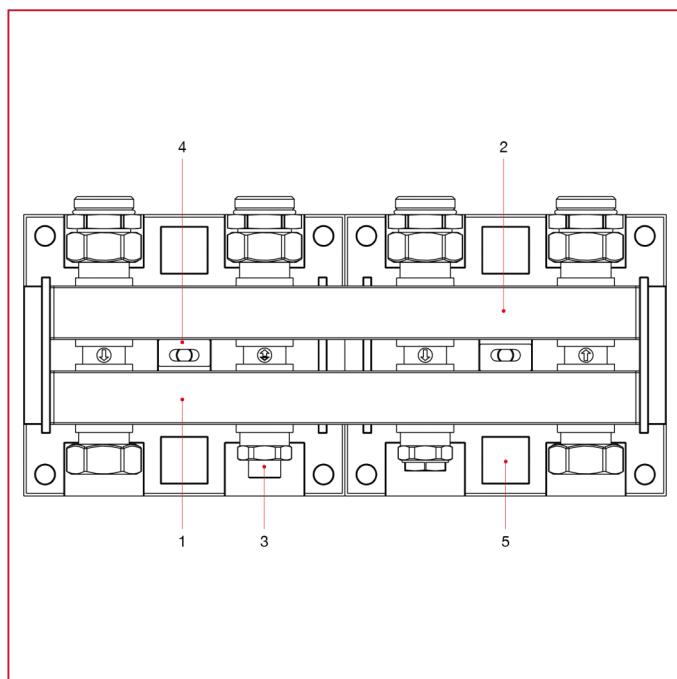




## DISTRIBUTION UNITS AND MANIFOLDS FOR CENTRAL HEATING PLANT

	1"	1"	1"
A	180	360	540
B	157,5	157,5	157,5
C	167,5	167,5	167,5
D	90	90	90
E	90	270	450
F	1" M ISO228	1" M ISO228	1" M ISO228
G	1" F ISO228	1" F ISO228	1" F ISO228
H	45	45	45
I	95	95	95

### MATERIALS



POS.	DESCRIPTION	N.	MATERIAL
1	Return manifold	1	AISI 304
2	Supply manifold	1	AISI 304
3	Hydraulic separator regulation	1	-
4	Wall mounting bracket	2	-
5	Insulation shell	1	EPP 38 kg/m3



**ITAP S.p.A.**  
Via Ruca 19  
25065 Lumezzane  
Brescia (ITALY)  
Tel 030 8927011  
Fax 030 8921990  
[www.itap.it](http://www.itap.it) - [info@itap.it](mailto:info@itap.it)

We reserve the right to make improvements and changes to the products described herein and to the relative technical data, at any time and without forewarning.

rev. 20240202