



TECHNICAL CATALOGUE

# MECHANICAL FITTINGS AND ACCESSORIES

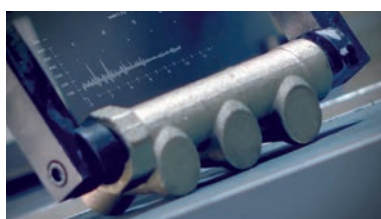


## > THE COMPANY

ITAP SpA, founded in Lumezzane (Brescia) in 1972, is currently one of the leading production companies in Italy of **valves, fittings and distribution manifolds** for plumbing and heating systems.

Thanks to a fully automated production process, with 85 transfer machines and 55 assembly lines, it is capable of producing 400,000 pieces per day.

Our innate pursuit for innovation and observance of technical regulations is supported by the company certification ISO 9001. The company has always considered its focus on quality as the main tool to obtain significant business results: today ITAP SpA is proud to offer products bearing the approval of numerous international certifying bodies.



➤ ITAP products have obtained approvals by more than 30 certification bodies from all over the world.





# MECHANICAL FITTINGS AND ACCESSORIES

## 151 3-piece straight connector, flat washer

### MECHANICAL FITTINGS AND ACCESSORIES



MEASURE	PRESSURE	CODE	PACKING
1/2"	50bar/725psi	1510012	20/240
3/4"	40bar/580psi	1510034	15/135
1"	40bar/580psi	1510100	10/90
1"1/4	30bar/435psi	1510114	6/54
1"1/2	30bar/435psi	1510112	4/36
2"	25bar/362,5psi	1510200	2/24

### CERTIFICATIONS



### TECHNICAL SPECIFICATIONS

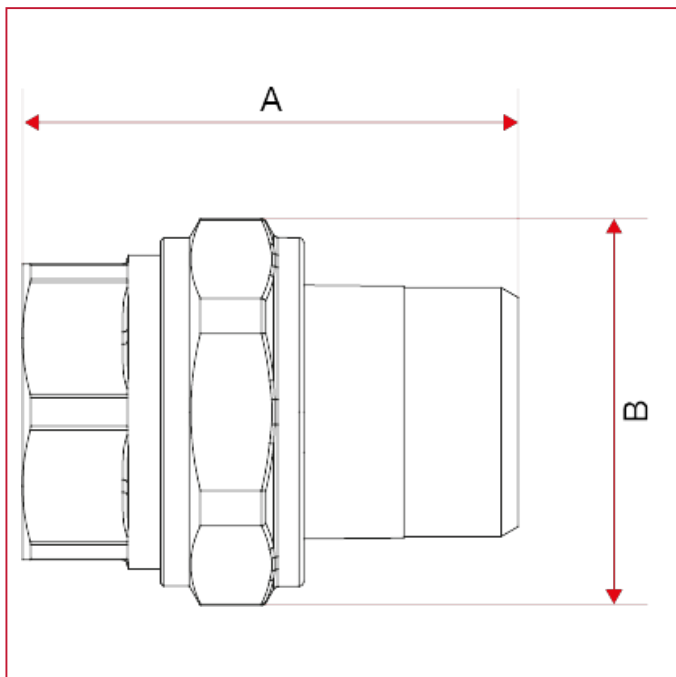
Suitable for domestic water services, heating and air-conditioning plants.

Body in brass.

Minimum and maximum working temperatures: -20°C, 120°C (in absence of steam).

Female threads: ISO228 (equivalent to DIN EN ISO 228 and BS EN ISO 228).

### OVERALL DIMENSIONS

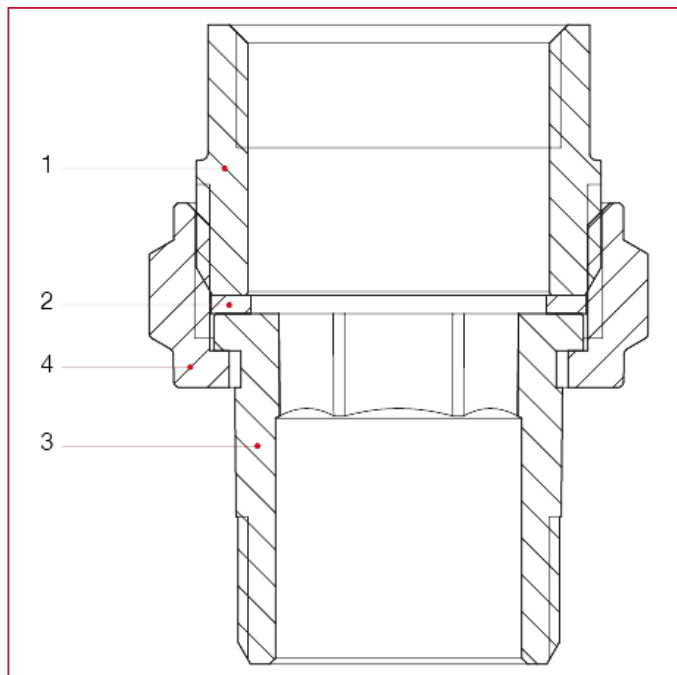




## MECHANICAL FITTINGS AND ACCESSORIES

	1/2"	3/4"	1"	1"1/4	1"1/2	2"
DN	15	20	25	32	40	50
A	47	52	61	69,5	74	78
B	33	40,5	49	55	69	87
Kg/cm2 bar	50	40	40	30	30	25
LBS - psi	725	580	580	435	435	362,5

### MATERIALS



POS.	DESCRIPTION	N.	MATERIAL
1	Streight connector with flat seat	1	Brass CW617N
2	Flat seat washer	1	Fiber
3	Flat seat union	1	Brass CW617N
4	Nut	1	Brass CW617N





# MECHANICAL FITTINGS AND ACCESSORIES

## 152 3-piece elbow, flat washer

### MECHANICAL FITTINGS AND ACCESSORIES



MEASURE	PRESSURE	CODE	PACKING
1/2"	50bar/725psi	1520012	15/180
3/4"	40bar/580psi	1520034	12/96
1"	40bar/580psi	1520100	8/64
1"1/4	30bar/435psi	1520114	6/36

### CERTIFICATIONS



### TECHNICAL SPECIFICATIONS

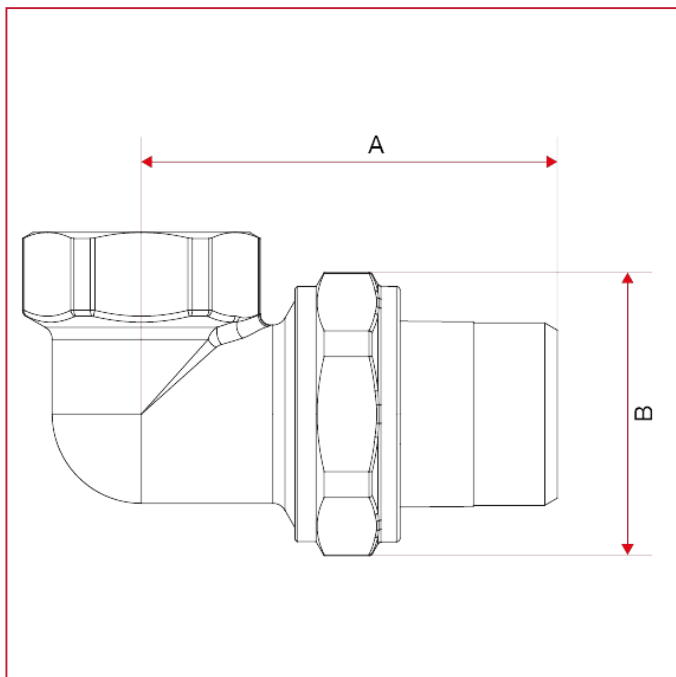
Suitable for domestic water services, heating and air-conditioning plants.

Body in brass.

Minimum and maximum working temperatures: -20°C, 120°C (in absence of steam).

Female threads: ISO228 (equivalent to DIN EN ISO 228 and BS EN ISO 228).

### OVERALL DIMENSIONS

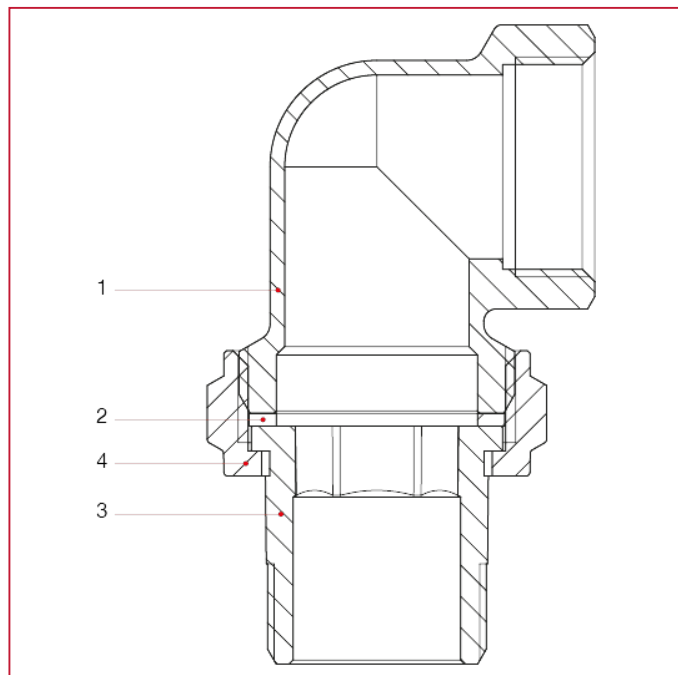




## MECHANICAL FITTINGS AND ACCESSORIES

	1/2"	3/4"	1"	1"1/4
DN	15	20	25	32
A	51,5	59,5	70	79,5
B	33	40,5	49	55
Kg/cm2 bar	50	40	40	30
LBS - psi	725	580	580	435

### MATERIALS



POS.	DESCRIPTION	N.	MATERIAL
1	Elbow adaptor	1	Brass CW617N
2	Flat seat washer	1	Fiber
3	Flat seat union	1	Brass CW617N
4	Nut	1	Brass CW617N



# MECHANICAL FITTINGS AND ACCESSORIES

## 161 3-piece straight connector, with o-ring

### MECHANICAL FITTINGS AND ACCESSORIES



MEASURE	PRESSURE	CODE	PACKING
1/2"	50bar/725psi	1610012	20/240
3/4"	40bar/580psi	1610034	15/135
1"	40bar/580psi	1610100	10/90
1"1/4	30bar/435psi	1610114	6/54
1"1/2	30bar/435psi	1610112	4/36
2"	25bar/362,5psi	1610200	2/24

### CERTIFICATIONS



### TECHNICAL SPECIFICATIONS

Suitable for domestic water services, heating and air-conditioning plants.

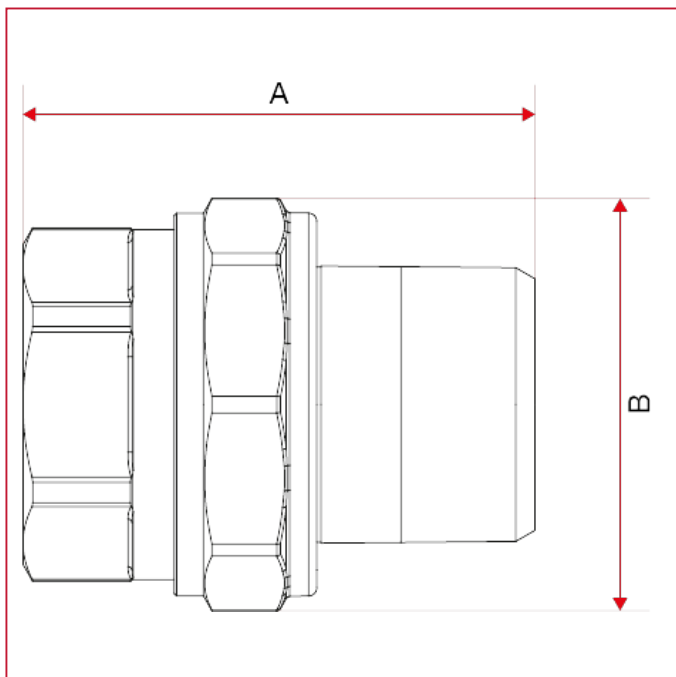
Body in nickel-plated brass.

Minimum and maximum working temperatures: -20°C, 120°C (in absence of steam).

Female threads: ISO228 (equivalent to DIN EN ISO 228 and BS EN ISO 228).

Size 1"1/2 and 2" have flat seat.

### OVERALL DIMENSIONS

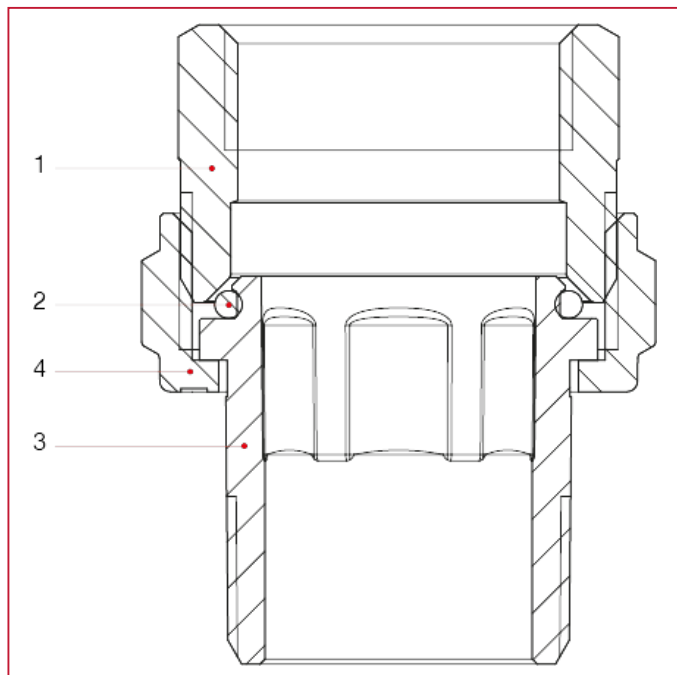




## MECHANICAL FITTINGS AND ACCESSORIES

	1/2"	3/4"	1"	1"1/4	1"1/2	2"
DN	15	20	25	32	40	50
A	46	52	61	68	73,5	78
B	33	40,5	49	55	69	87
Kg/cm2 bar	50	40	40	30	30	25
LBS - psi	725	580	580	435	435	362,5

### MATERIALS



POS.	DESCRIPTION	N.	MATERIAL
1	Straight connector	1	Nickel-plated brass CW617N
2	O-ring	1	NBR
3	Union	1	Nickel-plated brass CW617N
4	Nut	1	Nickel-plated brass CW617N



# MECHANICAL FITTINGS AND ACCESSORIES

## 161G 3-piece straight connector, with o-ring

### MECHANICAL FITTINGS AND ACCESSORIES



MEASURE	PRESSURE	CODE	PACKING
1/2"	50bar/725psi	1610012G	20/240
3/4"	40bar/580psi	1610034G	15/135
1"	40bar/580psi	1610100G	12/108
1"1/4	30bar/435psi	1610114G	6/54

### CERTIFICATIONS



### TECHNICAL SPECIFICATIONS

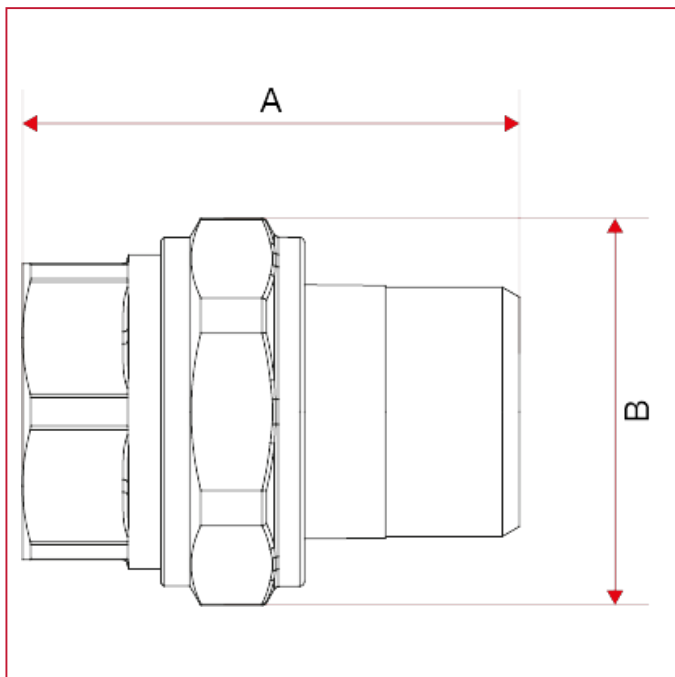
Suitable for domestic water services, heating and air-conditioning plants.

Body in brass.

Minimum and maximum working temperatures: -20°C, 120°C (in absence of steam).

Female threads: ISO228 (equivalent to DIN EN ISO 228 and BS EN ISO 228).

### OVERALL DIMENSIONS

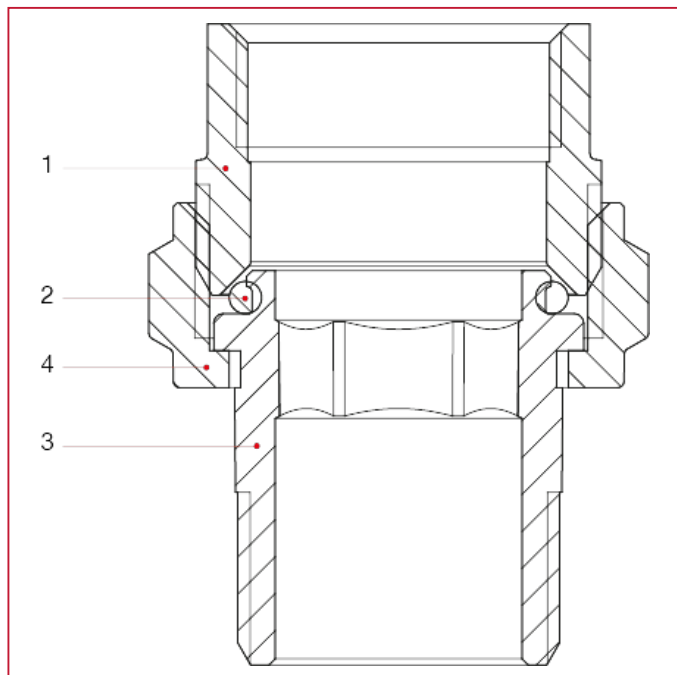




## MECHANICAL FITTINGS AND ACCESSORIES

	1/2"	3/4"	1"	1"1/4
DN	15	20	25	32
A	46	52	61	68
B	33	40,5	49	55
Kg/cm2 bar	50	40	40	30
LBS - psi	725	580	580	435

### MATERIALS



POS.	DESCRIPTION	N.	MATERIAL
1	Streight connector	1	Brass CW617N
2	O-ring	1	NBR
3	Union	1	Brass CW617N
4	Nut	1	Brass CW617N





# MECHANICAL FITTINGS AND ACCESSORIES

## 162 3-piece elbow, with o-ring

### MECHANICAL FITTINGS AND ACCESSORIES



MEASURE	PRESSURE	CODE	PACKING
1/2"	50bar/725psi	1620012	15/180
3/4"	40bar/580psi	1620034	12/96
1"	40bar/580psi	1620100	8/64
1"1/4	30bar/435psi	1620114	6/36

### CERTIFICATIONS



### TECHNICAL SPECIFICATIONS

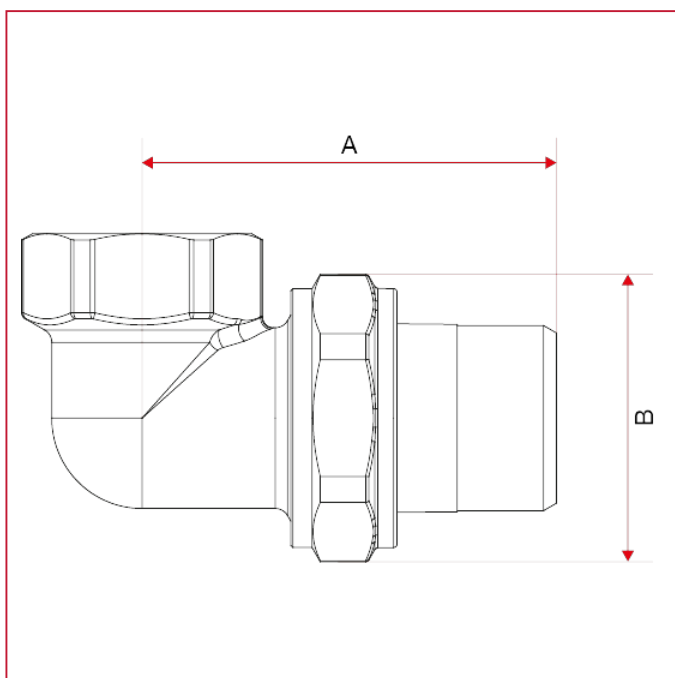
Suitable for domestic water services, heating and air-conditioning plants.

Body in nickel-plated brass.

Minimum and maximum working temperatures: -20°C, 120°C (in absence of steam).

Female threads: ISO228 (equivalent to DIN EN ISO 228 and BS EN ISO 228).

### OVERALL DIMENSIONS

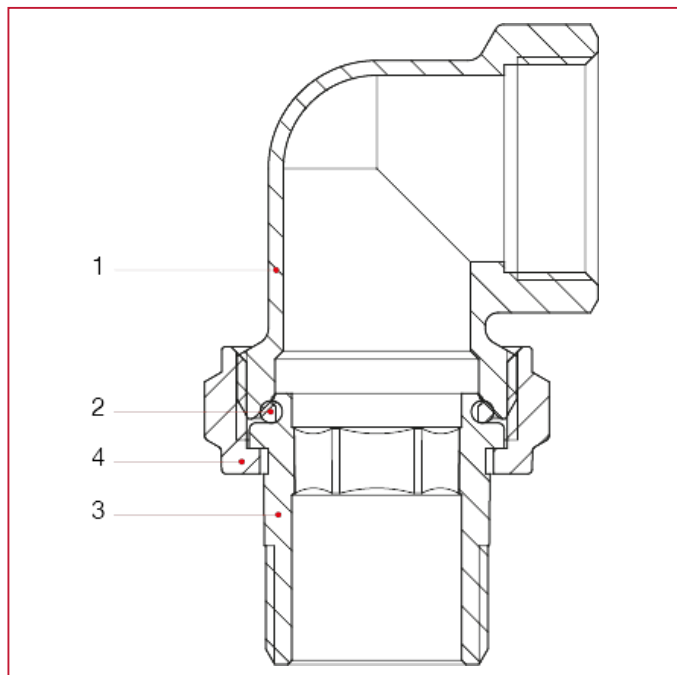




## MECHANICAL FITTINGS AND ACCESSORIES

	1/2"	3/4"	1"	1"1/4
DN	15	20	25	32
A	51	58,5	69,5	80
B	33	40,5	49	55
Kg/cm2 bar	50	40	40	30
LBS - psi	725	580	580	435

### MATERIALS



POS.	DESCRIPTION	N.	MATERIAL
1	Elbow adaptor	1	Nickel-plated brass CW617N
2	O-ring	1	NBR
3	Union	1	Nickel-plated brass CW617N
4	Nut	1	Nickel-plated brass CW617N



## MECHANICAL FITTINGS AND ACCESSORIES

### 154 Connector for water meters

#### MECHANICAL FITTINGS AND ACCESSORIES



MEASURE	PRESSURE	CODE	PACKING
3/4"x1/2"	20bar/290psi	1540034	20/280
1"x3/4"	20bar/290psi	1540100	10/150
1"1/4x1"	20bar/290psi	1540114	6/84
1"1/2x1"1/4	20bar/290psi	1540112	2/60
2"x1"1/2	20bar/290psi	1540200	2/32
2"1/2x2"	20bar/290psi	1540212I	1/20

#### CERTIFICATIONS



#### TECHNICAL SPECIFICATIONS

Available sizes:

F3/4"xM1/2", F1"XM3/4", F1"1/4XM1", F1"1/2XM1"1/4, F2"XM1"1/2, F2"1/2XM2".

Nut and tail in brass.

Minimum and maximum working temperatures: -20°C, 120°C.

Threads: ISO 228 (equivalent to DIN EN ISO 228 and BS EN ISO 228).

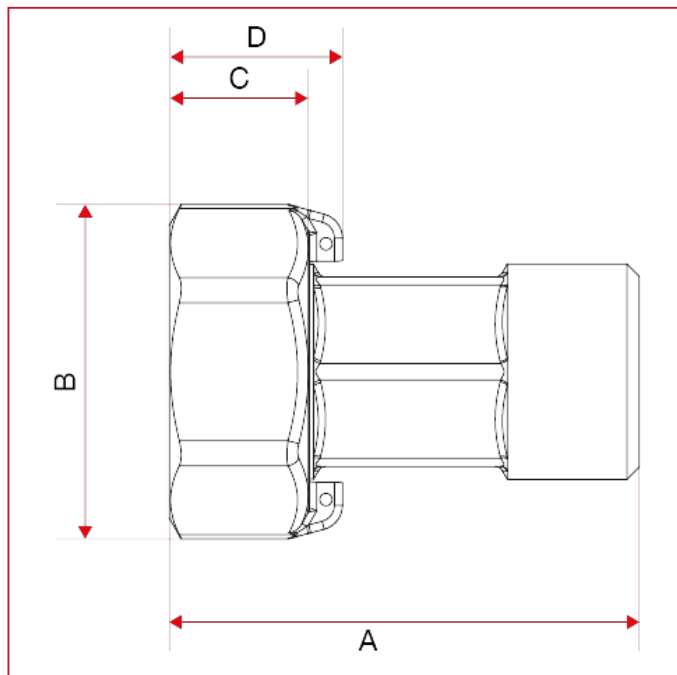
Available also with NPT thread.

ACS approved in 3/4 "and 1" sizes.



## MECHANICAL FITTINGS AND ACCESSORIES

### OVERALL DIMENSIONS

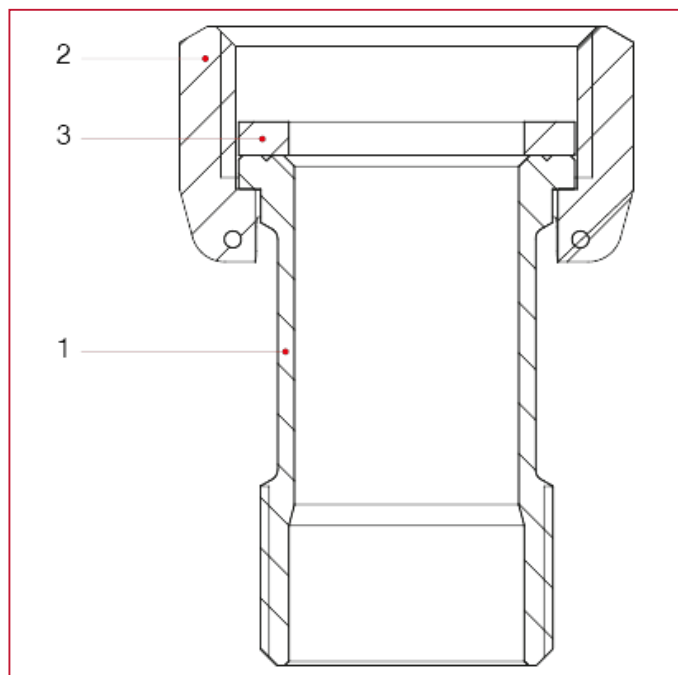


	3/4"x1/2"	1"x3/4"	1"1/4x1"	1"1/2x1" 1/4	2"x1"1/2	2"1/2x2"
DN	15	20	25	32	40	50
A	45,5	57	60,5	71	80,5	94
B	32	40,5	51,6	59,5	70	89
C	14,5	17	21,5	23	24,5	28
D	19	21	27	28	29	33,5
Kg/cm2 bar	20	20	20	20	20	20
LBS - psi	290	290	290	290	290	290



## MECHANICAL FITTINGS AND ACCESSORIES

### MATERIALS



POS.	DESCRIPTION	N.	MATERIAL
1	Union	1	Brass CW617N
2	Nut	1	Brass CW617N
3	Washer	1	EPDM



# MECHANICAL FITTINGS AND ACCESSORIES

## 110 5-way connector for pumps and tanks



MEASURE	PRESSURE	CODE	PACKING
1"	25bar/362.5psi	1100100	6/72

### CERTIFICATIONS



### TECHNICAL SPECIFICATIONS

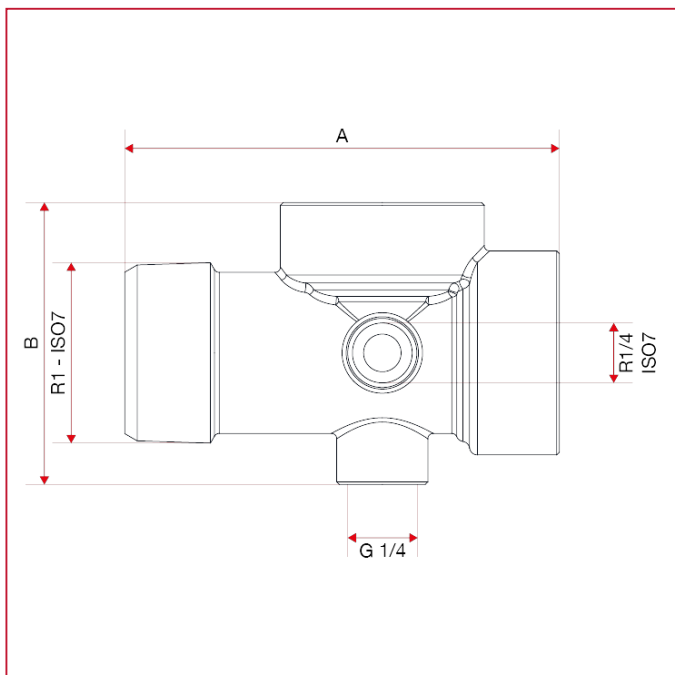
Body in brass.

Nominal pressure: 25 bar.

Female threads: ISO228 (equivalent to DIN EN ISO 228 and BS EN ISO 228).

Male threads: ISO 7/1 (equivalent to DIN EN 10226-1 and BS EN 10226-1).

### OVERALL DIMENSIONS



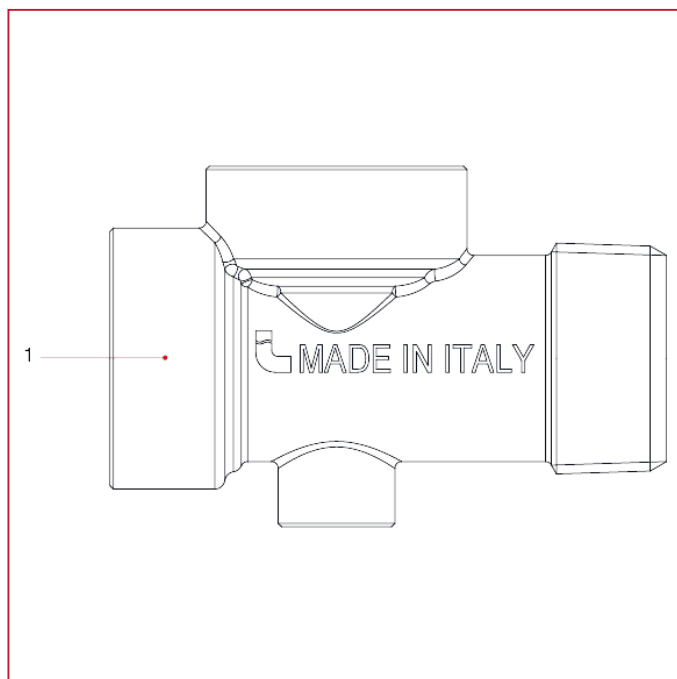




## MECHANICAL FITTINGS AND ACCESSORIES

	1"
A	81
B	52,5
Kg/cm2 bar	25
LBS - psi	362,5

### MATERIALS



POS.	DESCRIPTION	N.	MATERIAL
1	Body	1	Brass CW617N



## MECHANICAL FITTINGS AND ACCESSORIES

### 275 Reduction 3/8"x1/2"



MEASURE	CODE	PACKING
3/8"x1/2"	2750012	250/3000

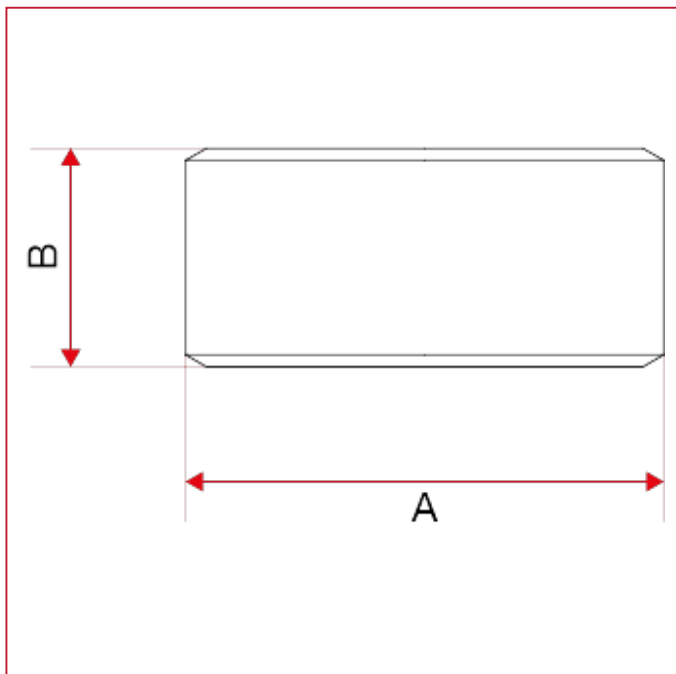
#### CERTIFICATIONS



#### TECHNICAL SPECIFICATIONS

Female threads: ISO228 (equivalent to DIN EN ISO 228 and BS EN ISO 228).

#### OVERALL DIMENSIONS

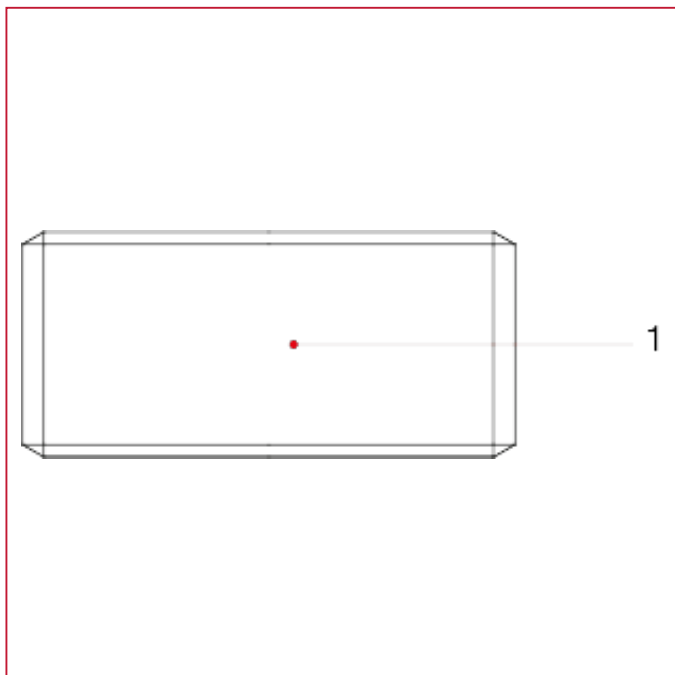


	3/8"x1/2"
A	20,8
B	9,5



## MECHANICAL FITTINGS AND ACCESSORIES

### MATERIALS



POS.	DESCRIPTION	N.	MATERIAL
1	Reduction	1	Brass CW614N



## MECHANICAL FITTINGS AND ACCESSORIES

### 276 Reduction 3/4"x1/2", inner hexagon



MEASURE	CODE	PACKING
3/4"x1/2"	2760034	125/1000

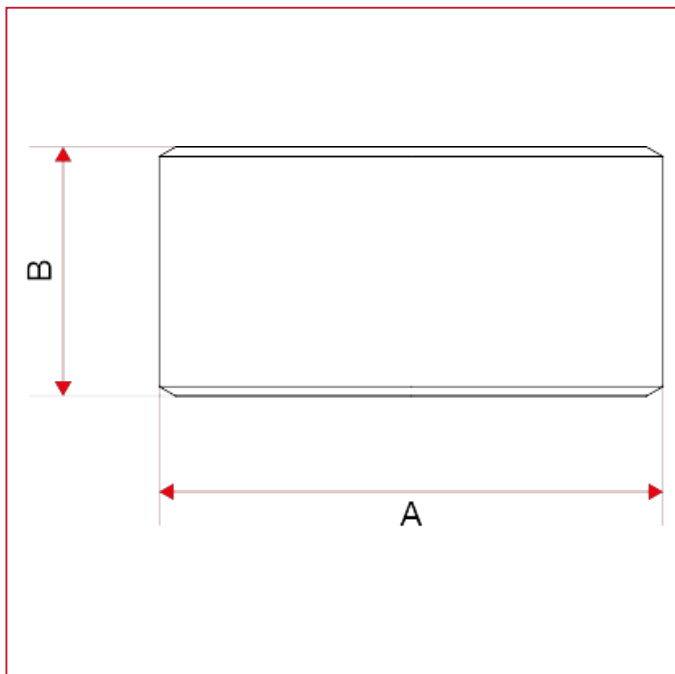
#### CERTIFICATIONS



#### TECHNICAL SPECIFICATIONS

Female threads: ISO228 (equivalent to DIN EN ISO 228 and BS EN ISO 228).

#### OVERALL DIMENSIONS

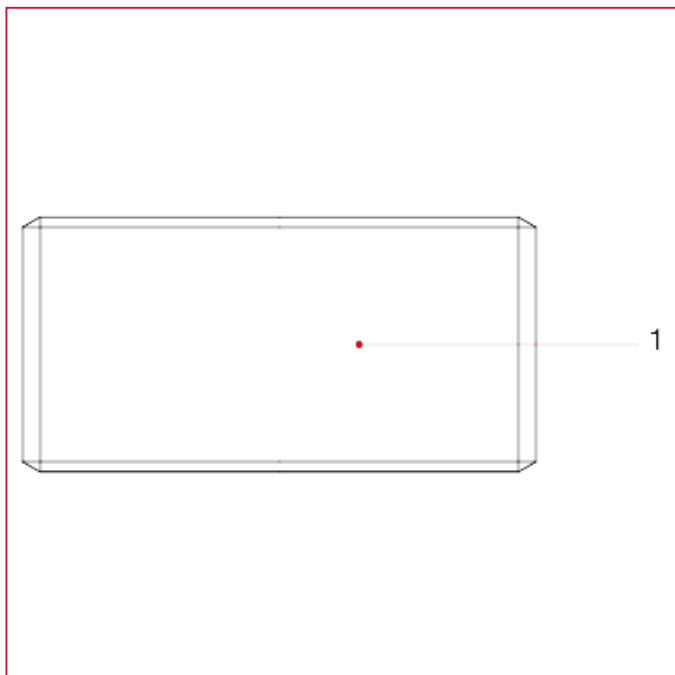


	3/4"x1/2"
A	26,3
B	13



## MECHANICAL FITTINGS AND ACCESSORIES

### MATERIALS



POS.	DESCRIPTION	N.	MATERIAL
1	Reduction	1	Nickel-plated brass CW614N



## MECHANICAL FITTINGS AND ACCESSORIES

### 142 PTFE taper



#### CODE

1420012

#### PACKING

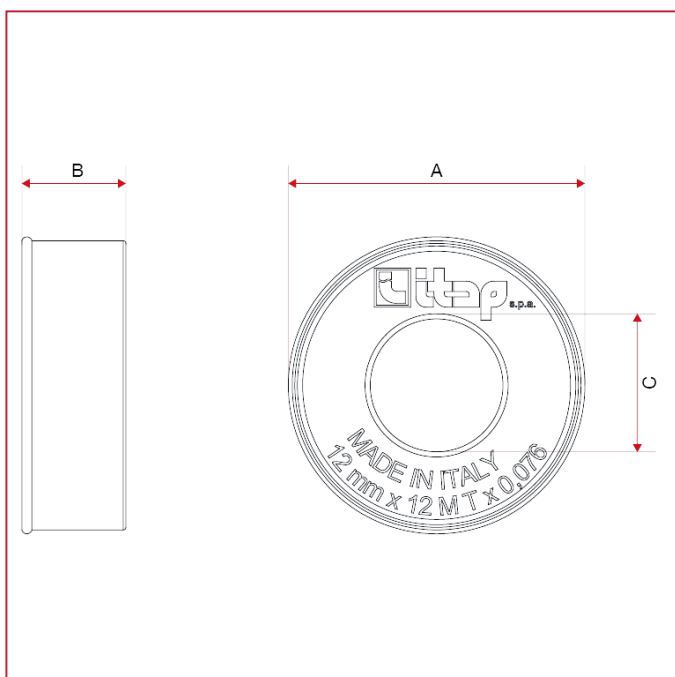
300/300

#### TECHNICAL SPECIFICATIONS

Available size: mm12xmm0,076.

Length: m12.

#### OVERALL DIMENSIONS



A	57
B	20
C	25,5





## MECHANICAL FITTINGS AND ACCESSORIES

### **ROL075** Thread sealing for metal thread joints

ml.75



CODE	PACKING
ROL075	4/32

#### **TECHNICAL SPECIFICATIONS**

Composition: anaerobic methacrylate.

Colour: yellow.

Viscosity (+B2652+25° - mPa s): 20.000 - 80.000 thixotropic.

Specific weight (g/ml): 1,1.

Fluorescence: under blue light.

Flash point: > +100°C.

Gap filling: M56 / 2" / 0,30mm.

Handling cure time: 15-30 minutes.

Functional cure time: 1-2 hours.

Final cure time: 3-6 hours.

Locking torque breakaway (ISO 10964): 18 - 24 N x m.

Locking torque prevailing (ISO 10964): 7 - 14 N x m.

Shear strength (ISO 10123: 6-3 N/mm<sup>2</sup>).

Temperature range: -55°C - +150°C.

Anaerobic curing adhesive for sealing of metal thread joints only.

Approved for Gas ( DVGW, DIN-EN 751-1), high pressure gas and GLP for working pressure up to 20 Bars.

WRAS listed for contact with wholesome (potable) water.

NSF registered in cat. P1 as acceptable for use as a sealant in and around food processing area.

Approved for use with gaseous oxygen up to 10 Bars and +60°C (BAM Ref. N° II-717/2007 E).

It seals against gas, water, LPG, hydrocarbons, oils and other chemicals.

Thixotropic property prevents migration of sealant from thread before or during curing.

It replaces PTFE tape and yarn and gives instant sealing against moderate pressure.

Shock and vibrations resistant, sealing properties unaffected over the temperature range from -55°C to +150°C.



## MECHANICAL FITTINGS AND ACCESSORIES

### **TUB100** Thread sealing for metal thread joints

ml.100



CODE	PACKING
TUB100	7/35

#### **TECHNICAL SPECIFICATIONS**

Composition: anaerobic methacrylate.

Colour: yellow.

Viscosity (+B2652+25° - mPa s): 20.000 - 80.000 thixotropic.

Specific weight (g/ml): 1,1.

Fluorescence: under blue light.

Flash point: > +100°C.

Gap filling: M56 / 2" / 0,30mm.

Handling cure time: 15-30 minutes.

Functional cure time: 1-2 hours.

Final cure time: 3-6 hours.

Locking torque breakaway (ISO 10964): 18 - 24 N x m.

Locking torque prevailing (ISO 10964): 7 - 14 N x m.

Shear strength (ISO 10123: 6-3 N/mm<sup>2</sup>).

Temperature range: -55°C - +150°C.

Anaerobic curing adhesive for sealing of metal thread joints only.

Approved for Gas ( DVGW, DIN-EN 751-1), high pressure gas and GLP for working pressure up to 20 Bars.

WRAS listed for contact with wholesome (potable) water.

NSF registered in cat. P1 as acceptable for use as a sealant in and around food processing area.

Approved for use with gaseous oxygen up to 10 Bars and +60°C (BAM Ref. N° II-717/2007 E).

It seals against gas, water, LPG, hydrocarbons, oils and other chemicals.

Thixotropic property prevents migration of sealant from thread before or during curing.

It replaces PTFE tape and yarn and gives instant sealing against moderate pressure.

Shock and vibrations resistant, sealing properties unaffected over the temperature range from -55°C to +150°C.



**ITAP S.p.A.**  
Via Ruca 19  
25065 Lumezzane  
Brescia (ITALY)  
Tel 030 8927011  
Fax 030 8921990  
[www.itap.it](http://www.itap.it) - [info@itap.it](mailto:info@itap.it)

We reserve the right to make improvements and changes to the products described herein and to the relative technical data, at any time and without forewarning.

rev. 20250402